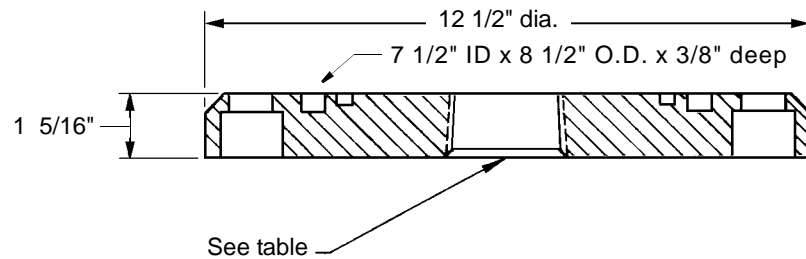
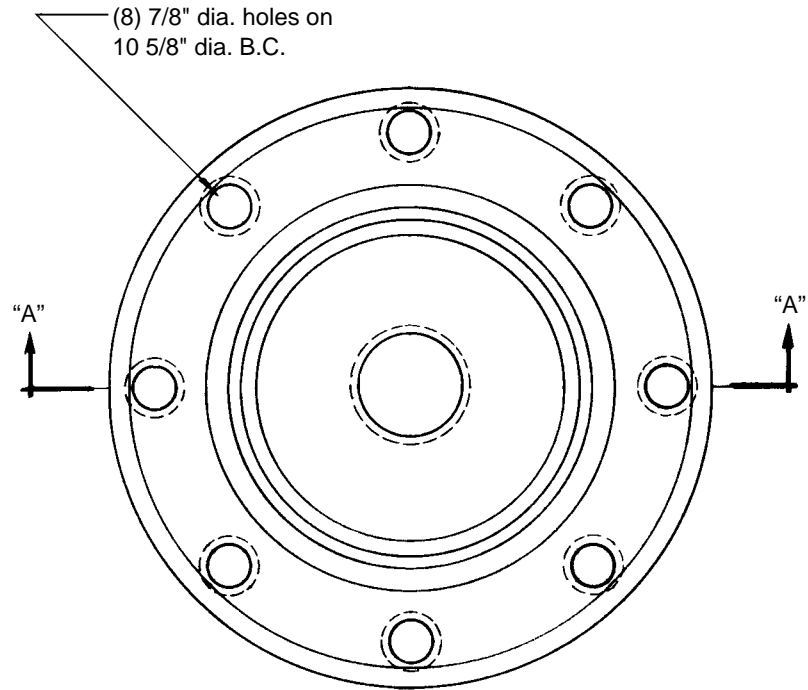


**BOTTOM EQUIPMENT  
FLANGES FOR UNIVERSAL SADDLE**

**376-21-CS, 376-21-SS  
376-22-CS, 376-22-SS  
376-24-CS, 376-24-SS**

© 2003 Midland Manufacturing Corp.  
All designs subject to change without notice. Installation dimensions and mounting arrangements are for general information. Certified drawings are available upon request.



PART NO.	MATERIAL	DRAIN HOLE
376-21-CS	STEEL	NONE
376-21-SS	STAINLESS	NONE
376-22-CS	STEEL	2" NPT
376-22-SS	STAINLESS	2" NPT
376-24-CS	STEEL	1" NPT
376-24-SS	STAINLESS	

ASSOCIATED HARDWARE		
QTY.	PART NO.	PART NAME
CHOOSE 1	547-33-BN(1)	"O" RING,
	549-33-TF	SPIRAL WOUND GASKET,
	548-34-AB	GROOVE GASKET
8	375-2-AS	CAPSCREWS W/LOCKWASHERS

**NOTES:** 1 Alternate material available



TO PLACE AN ORDER, OR JUST ASK A QUESTION, CALL (847) 677 - 0333 OR FAX (847) 677 - 0138

REVISION 4.0

8/25/05