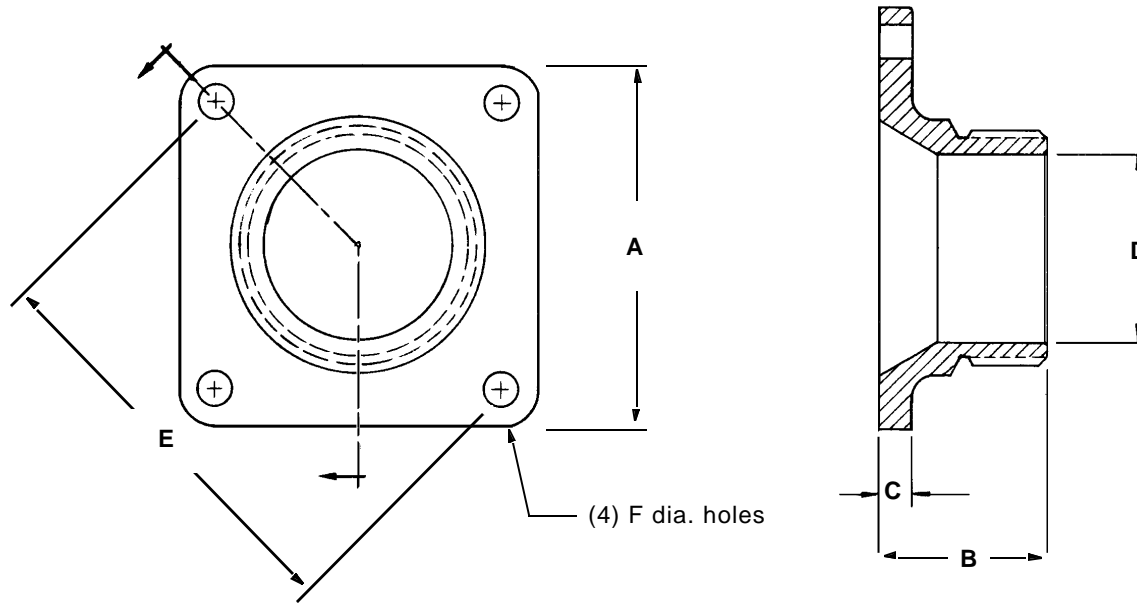


© 2002 Midland Manufacturing Corp.

All designs subject to change without notice. Installation dimensions and mounting arrangements are for general information. Certified drawings are available upon request.

OUTLET LEG NOZZLES

DIMENSIONS							PART NUMBERS				APPLICATION
THREAD	"A" SQ. OR DIA.	"B"	"C"	"D"	"E"	"F"	IRON PART NO.	STEEL PART NO.	18-8-SS PART NO.	316 SS PART NO.	
2 NPT	7 1/2" DIA.	4 3/8	11/16	2 1/16	6	3/4		63-CS	63-SS	63-MO	UTC-78672-02
5 1/4-4 NS	6 3/4" SQ.	3 3/4	3/4	4 1/4	7 3/4	11/16	64-DI		64-SS	64-MO	UTC, TRINITY, MIDLAND
5 1/4-4 NS	8 SQ.	3 3/4	3/4	4 1/4	9	3/4	65-DI		65-SS	65-MO	J 4" AND 6"
5 1/4-4 NS	10 1/2 DIA.	3 3/4	3/4	4 1/4	9	7/8	651-MI	651-CS	651-SS	651-MO	
5 1/4-4 NS	8 3/8 SQ.	3 3/4	3/4	4 1/4	9 1/2	7/8	66-DI	66-CS	66-SS	66-MO	A-560, A-567
6 NPSM	10 1/2 SQ.	3 1/4	3/4	6	9	3/4			67-SS	67-MO	A-547
5 1/4-4 NS	11 DIA.	3 3/4	3/4	4 1/4	9 & 9 1/2	3/4 & 7/8	68-DI	68-CS	68-SS	68-MO	A-547, A-560, A-567
6 ACME (MOD)	8 SQ.	3 5/8	1	4	9	3/4			69-1-CN		CIL
5 1/4-4 NS	5 3/4 SQ.	3 3/4	3/4	4 1/4	6 1/2	5/8		76-CS	76-SS	76-MO	K-2007 ACF
5 1/4-4 NS	5 3/4 SQ.	13 1/4	3/4	4 1/4	6 1/2	5/8		761-CS	761-SS	761-MO	K-2007 ACF
5 1/4-4 NS	5 3/4 SQ.	3 3/4	3/4	4 1/4	6	5/8		77-CS			J-6RIB3
5 1/4-4 NS	5 3/4 SQ.	3 3/4	3/4	4 1/4	6 3/8	3/4		78-CS	78-SS		J-5REB3



TO PLACE AN ORDER, OR JUST ASK A QUESTION, CALL (847) 677 - 0333 OR FAX (847) 677 - 0138

REVISION 4.0

6/6/00