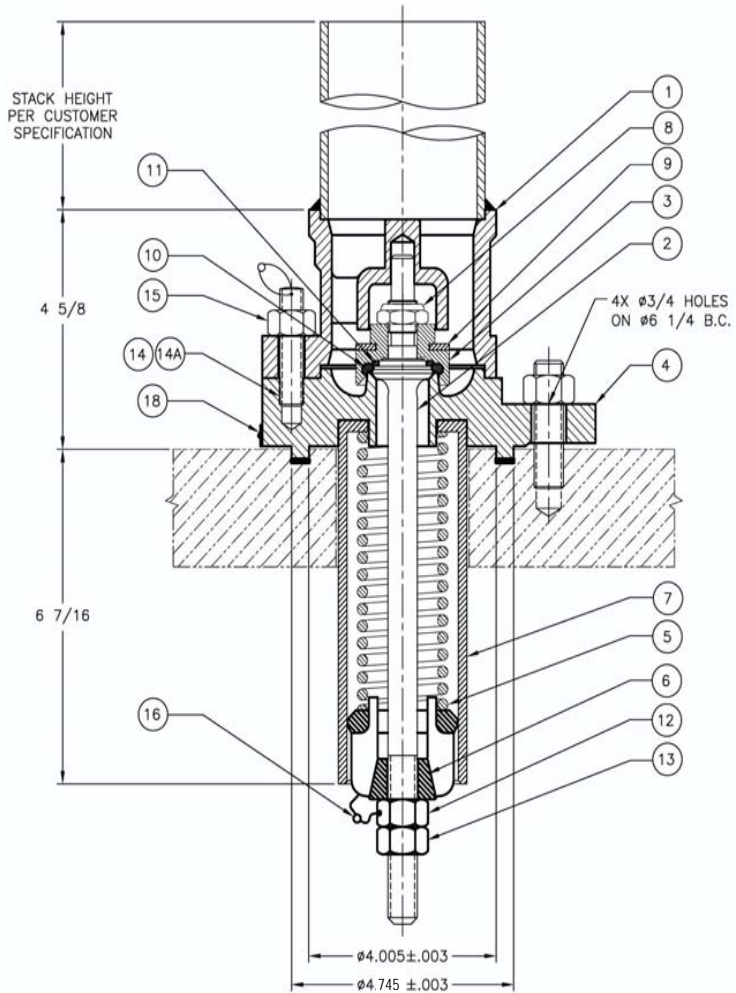


**PRESSURE RELIEF VALVES
PRESSURE RELIEF VALVE WITH STACK**

A-1000-S SERIES

© 2002 Midland Manufacturing Corp.

All designs subject to change without notice. Installation dimensions and mounting arrangements are for general information. Certified drawings are available upon request.



ITEM NO.	QTY.	PART NAME	A-1075 Thru A-1450 STAINLESS TRIM		A-1079 Thru A-1379 STAINLESS STEEL	
			MATERIAL	PART NO.	MATERIAL	PART NO.
1	1	TOP GUIDE	STEEL W/SS INSERT	SEE TABLE	STAINLESS	SEE TABLE
2	1	STEM	STAINLESS	10-2-SS	STAINLESS	10-2-SS
3	1	RETAINER	STEEL, PLATED ⁽²⁾	10-3-CS	STAINLESS	10-3-SS
4	1	BODY	STEEL	10-4-STD-CS	STAINLESS	10-4-STD-SS
5	1	SPRING	ALLOY STEEL, PLATED ⁽²⁾	SEE TABLE	STAINLESS	SEE TABLE
6	1	FOLLOWER	STEEL, PLATED ⁽²⁾	10-6-CS	STAINLESS	10-6-SS
7	1	SPRING GUIDE	STEEL, PLATED ⁽²⁾	10-7-CS	STAINLESS	10-7-SS
8	1	TOP LOCK NUT	STEEL, PLATED ⁽²⁾	10-8-CS	STAINLESS	10-8-SS
9	1	WASHER	NEOPRENE	10-9-NE	NEOPRENE	10-9-NE
10	1	SEAT "O" RING	BUNA-N ⁽¹⁾	10-10-BN	BUNA-N ⁽¹⁾	10-10-BN
11	1	STEM "O" RING	BUNA-N ⁽¹⁾	10-11-BN	BUNA-N ⁽¹⁾	10-11-BN
12	1	ADJUSTMENT NUT	STEEL, PLATED ⁽²⁾	10-12-CS	STAINLESS	10-12-SS
13	1	LOCK NUT	STEEL, PLATED ⁽²⁾	10-13-CS	STAINLESS	10-13-SS
14	2	STUD	ALLOY STEEL, PLATED ⁽²⁾	10-14-AS	STAINLESS	10-14-SS
14A	2	STUD W/HOLE	ALLOY STEEL, PLATED ⁽²⁾	10-141-AS	STAINLESS	10-141-SS
15	4	NUT	STEEL, PLATED ⁽²⁾	10-15-CS	STAINLESS	10-15-SS
16	2	WIRE SEAL	SS/LEAD	10-16-PB	STAINLESS	10-16-PB
17						
18	1	NAMEPLATE	STAINLESS	SEE TABLE	STAINLESS	SEE TABLE



TO PLACE AN ORDER, OR JUST ASK A QUESTION, CALL (847) 677 - 0333 OR FAX (847) 677 - 0138

REVISION 4.0

11/18/05



TO PLACE AN ORDER, OR JUST ASK A QUESTION, CALL (847) 677 - 0333 OR FAX (847) 677 - 0138

REVISION 4.0

06/10/05

A-1075 Thru A-1450 STAINLESS TRIM				
VALVE P/N	PRESSURE SETTING (PSIG)	FLOW RATE (SCFM AIR)	SPRING P/N	NAMEPLATE P/N
A-1075	75	1109	10-75-AS	12-75-SS
A-1100	100	1374	10-100-AS	12-100-SS
A-1150	150	2004	10-150-AS	12-150-SS
A-1165	165	2329	10-150-AS	12-165-SS
A-1225	225	2884	10-225-AS	12-225-SS
A-1247	247	3070	10-225-AS	12-247-SS
A-1255	255	3477	10-225-AS	12-225-SS
A-1280	280.5	3576	10-300-AS	12-280-SS
A-1300	300	3516	10-300-AS	12-300-SS
A-1330	330	4322	10-300-AS	12-330-SS
A-1375	375	4220	10-375-AS	12-375-SS
A-1450	450	4705	10-450-AS	12-450-SS

A-1079 Thru A-1379 STAINLESS STEEL				
VALVE P/N	PRESSURE SETTING (PSIG)	FLOW RATE (SCFM AIR)	SPRING P/N	NAMEPLATE P/N
A-1079	75	1113	10-79-SS	12-79-SS
A-1104	100	1371	10-104-SS	12-104-SS
A-1154	150	1940	10-154-SS	12-154-SS
A-1169	165	2611	10-165-SS	12-169-SS
A-1229	225	2670	10-229-SS	12-229-SS
A-1251	247.5	3245	10-229-SS	12-251-SS
A-1259	255	3344	10-229-SS	12-225-SS
A-1284	280.5	3697	10-304-SS	12-284-SS
A-1304	300	3695	10-304-SS	12-304-SS
A-1334	330	4262	10-304-SS	12-334-SS
A-1379	375	4615	10-379-SS	12-379-SS

STACK OPTIONS				
VALVE SUFFIX	CUSTOMER SPEC. STACK HEIGHT	GROOVE	TOP GUIDE PART NO.	
			CARBON STEEL	STAINLESS
-S01	8.75	YES	10-103-01-CS	10-103-01-SS
-S02	8.00	NO	10-103-02-CS	10-103-02-SS
-S03	6.44	NO	10-103-03-CS	10-103-03-SS
-S04	11.63	NO	10-103-04-CS	10-103-04-SS
-S05	7.00	NO	10-103-05-CS	10-103-05-SS
-S06	9.00	NO	10-103-06-CS	10-103-06-SS
-S07	5.38	NO	10-103-07-CS	10-103-07-SS
-S08	8.38	NO	10-103-08-CS	10-103-08-SS

NOTES:

1. ALTERNATE MATERIAL AVAILABLE.
2. STANDARD PLATING IS ZINC OR CADMIUM.
3. PART NUMBER EXAMPLE: A-1075-S01.
4. FOR VALVE WITHOUT STACK SEE A-1075 THRU A-1450.

PRESSURE RELIEF VALVES

A-1000-S SERIES