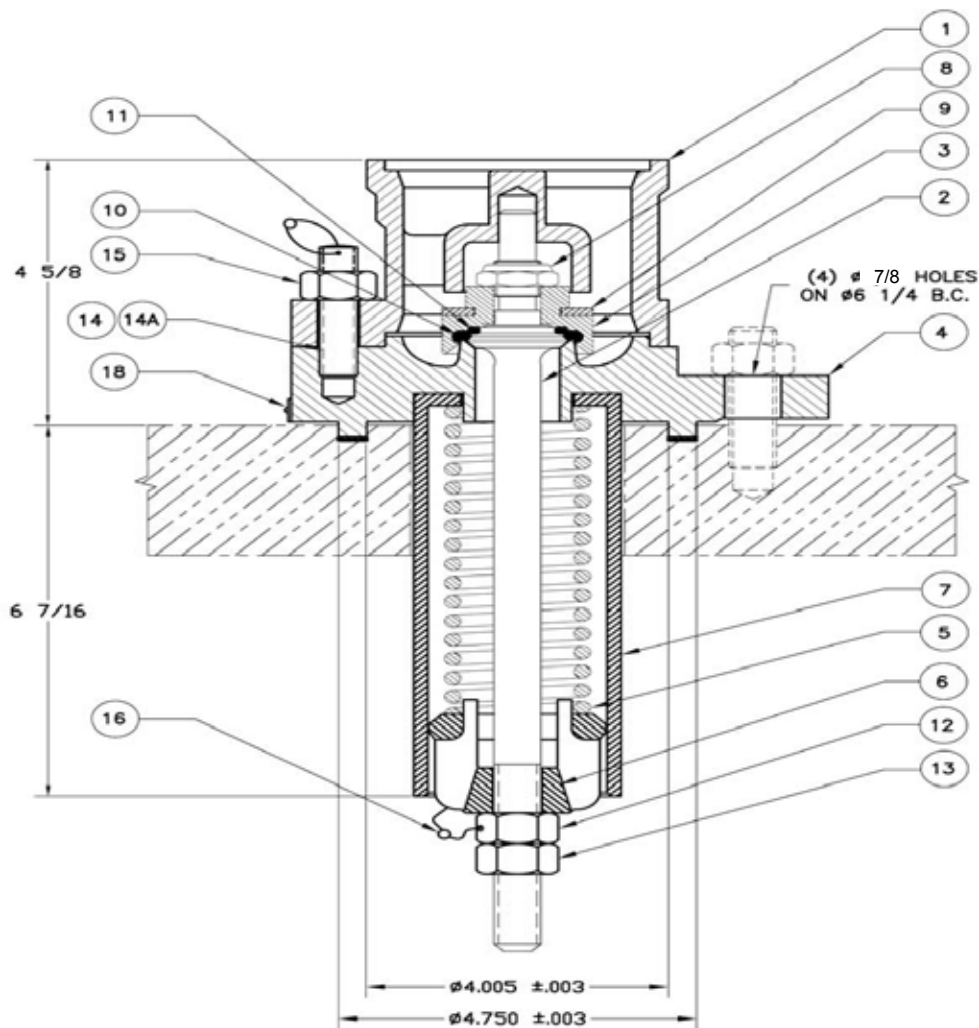


PRESSURE RELIEF VALVES

A-1035 Thru A-1450

© 2002 Midland Manufacturing Corp.

All designs subject to change without notice. Installation dimensions and mounting arrangements are for general information. Certified drawings are available upon request.



NOTES:

1 FLANGE HOLES: Four 7/8" dia. holes are standard on all valves, except 3/4" dia. holes on A-1035 and A-1039. For 7/8" dia. holes on A-1039 or 3/4" dia. holes on A-1075 through A-1450 use suffix "H". For any other, use suffix "J" and specify.

2 BOLT CIRCLE: 6 1/4" dia. is standard on all valves. For a 6 1/2" dia., use suffix "B". For any other use suffix "C" and specify.

3 MOUNTING: The standard mounting on all valves, except A-1035 and A-1039, is the AAR standard tongue with an O.D. of 4.745"±.003" and an I.D. of 4.005"±.003". For the A-1035 and A-1039, the standard mounting is a flat face flange. If a special tongue of 4.995" x 4.255" is desired, use suffix "M". If a flat face flange is desired for any valve (other than A-1035 and A-1039) use suffix "F". For any other mounting, use suffix "P" and specify.

EXAMPLE OF ORDERING FOR SPECIAL REQUIREMENTS:

An A-1150-HBM valve is an A-1150 valve with (4) 3/4" dia. holes on a 6 1/2" dia. bolt circle and a 4.995" x 4.255" tongue.

NET FLOW AREA : 0.687 SQUARE INCHES

WEIGHT OF VALVE 25 LBS.

Contact Midland Manufacturing to determine necessary J, C and P designations for any non-standard flange hole, bolt circle and mounting requirements.



TO PLACE AN ORDER, OR JUST ASK A QUESTION, CALL (847) 677 - 0333 OR FAX (847) 677 - 0138

REVISION 4.0

6/23/05