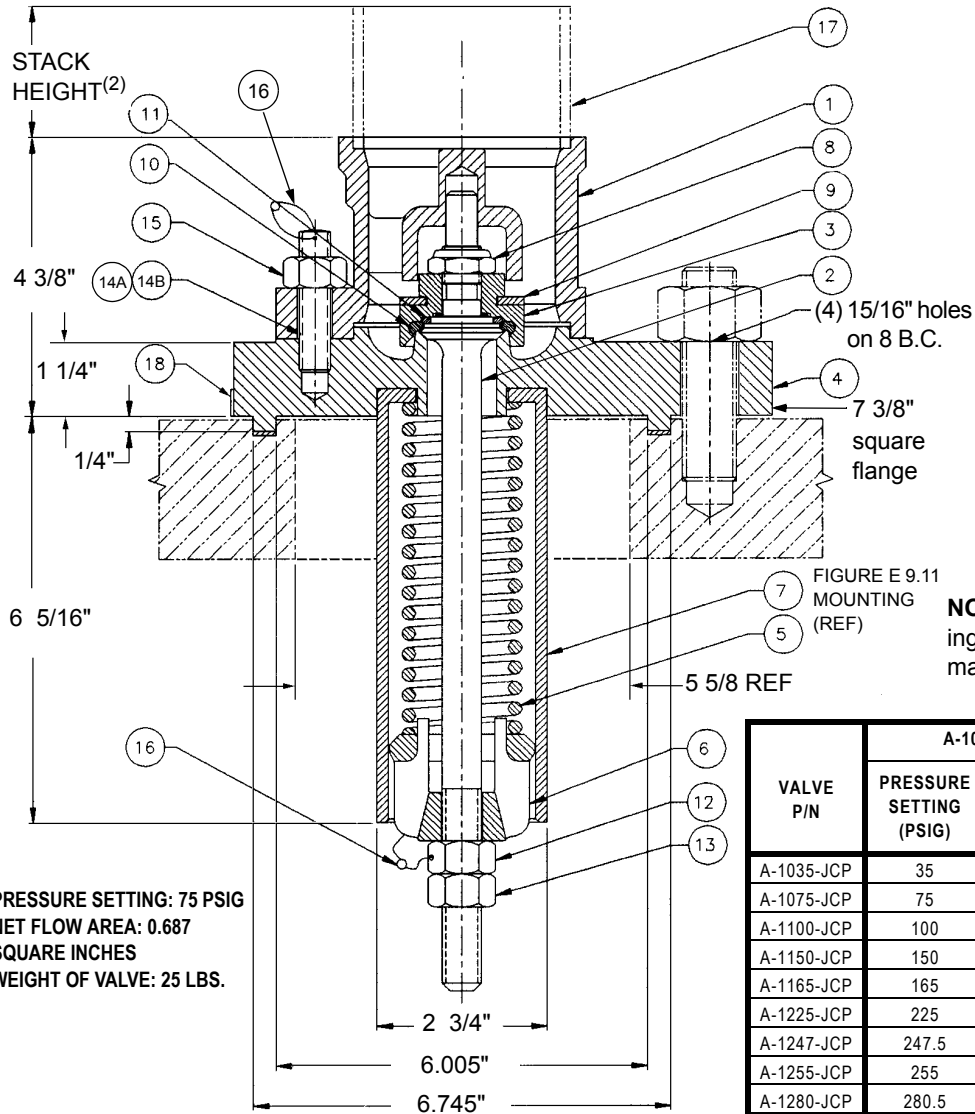


© 2002 Midland Manufacturing Corp.

All designs subject to change without notice. Installation dimensions and mounting arrangements are for general information. Certified drawings are available upon request.



PRESSURE SETTING: 75 PSIG
NET FLOW AREA: 0.687
SQUARE INCHES
WEIGHT OF VALVE: 25 LBS.

FIGURE E 9.11
 MOUNTING (REF)

ITEM NO.	QTY.	PART NAME	A-1075-JCP STAINLESS TRIM		A-1079-JCP STAINLESS STEEL	
			MATERIAL	PART NO.	MATERIAL	PART NO.
1	1	TOP GUIDE	STEEL W/SS INSERT	10-1-XS	STAINLESS STEEL	10-1-SS
2	1	STEM	STAINLESS STEEL	10-2-SS	STAINLESS STEEL	10-2-SS
3	1	RETAINER	STEEL, PLATED ⁽³⁾	10-3-CS	STAINLESS STEEL	10-3-SS
4	1	BODY	STEEL	10-44-CS	STAINLESS STEEL	10-44-SS
5	1	SPRING	ALLOY STEEL, PLATED ⁽⁴⁾	10-75-AS	STAINLESS STEEL	10-79-SS
6	1	FOLLOWER	STEEL, PLATED ⁽³⁾	10-6-CS	STAINLESS STEEL	10-6-SS
7	1	SPRING GUIDE	STEEL, PLATED ⁽³⁾	10-7-CS	STAINLESS STEEL	10-7-SS
8	1	TOP LOCK NUT	STEEL, PLATED W/INSERT	10-8-CS	SS W/INSERT	10-8-SS
9	1	BUMPER	NEOPRENE	10-9-NE	NEOPRENE	10-9-NE
10	1	SEAT "O"-RING	BUNA-N ⁽¹⁾	10-10-BN	BUNA-N ⁽¹⁾	10-10-BN
11	1	STEM "O"-RING	BUNA-N ⁽¹⁾	10-11-BN	BUNA-N ⁽¹⁾	10-11-BN
12	1	ADJUSTMENT NUT	STEEL, PLATED ⁽³⁾	10-12-CS	STAINLESS STEEL	10-12-SS
13	1	LOCK NUT	STEEL, PLATED ⁽³⁾	10-13-CS	STAINLESS STEEL	10-13-SS
14A	2	STUD	ALLOY STEEL, PLATED ⁽³⁾	10-14-AS	STAINLESS STEEL	10-14-SS
14B	2	STUD W/HOLE	ALLOY STEEL, PLATED ⁽³⁾	10-141-AS	STAINLESS STEEL	10-141-SS
15	4	NUT	STEEL, PLATED ⁽³⁾	10-15-CS	STAINLESS STEEL	10-15-SS
16	2	WIRE SEAL	STAINLESS STEEL/LEAD	10-16-PB	STAINLESS STEEL/LEAD	10-16-PB
17	1	3" STD. PIPE ⁽²⁾	STEEL	10-17-CS	STAINLESS STEEL	10-17-SS
18	1	NAMEPLATE	STAINLESS STEEL	12-75-SS	STAINLESS STEEL	12-79-SS

NOTES: 1 Alternate material available. 2 Stack is optional. Specify stack height when ordering with stack. 3 Standard plating is zinc or cadmium. 4 Standard plating is zinc with dichromate. For aluminum coated spring, specify AS/AL. For stainless steel spring, specify SS.

VALVE P/N	A-1035 Thru A-1450 STAINLESS TRIM			
	PRESSURE SETTING (PSIG)	FLOW RATE (SCFM AIR)	SPRING P/N	NAME-PLATE P/N
A-1035-JCP	35	661	10-35-AS	12-35-SS
A-1075-JCP	75	1109	10-75-AS	12-75-SS
A-1100-JCP	100	1374	10-100-AS	12-100-SS
A-1150-JCP	150	2004	10-150-AS	12-150-SS
A-1165-JCP	165	2329	10-150-AS	12-165-SS
A-1225-JCP	225	2884	10-225-AS	12-225-SS
A-1247-JCP	247.5	3070	10-225-AS	12-247-SS
A-1255-JCP	255	3477	10-225-AS	12-255-SS
A-1280-JCP	280.5	3576	10-300-AS	12-280-SS
A-1300-JCP	300	3516	10-300-AS	12-300-SS
A-1330-JCP	330	4322	10-300-AS	12-330-SS
A-1375-JCP	375	4220	10-375-AS	12-375-SS
A-1450-JCP	450	4705	10-450-AS	12-450-SS

VALVE P/N	A-1039 Thru A-1379 STAINLESS STEEL			
	PRESSURE SETTING (PSIG)	FLOW RATE (SCFM AIR)	SPRING P/N	NAME-PLATE P/N
A-1039-JCP	35	661	10-39-SS	12-39-SS
A-1079-JCP	75	1113	10-79-SS	12-79-SS
A-1104-JCP	100	1371	10-104-SS	12-104-SS
A-1154-JCP	150	1940	10-154-SS	12-154-SS
A-1169-JCP	165	2611	10-165-SS	12-169-SS
A-1229-JCP	225	2670	10-229-MO	12-229-SS
A-1251-JCP	247.5	3245	10-229-MO	12-251-SS
A-1259-JCP	255	3344	10-229-MO	12-255-SS
A-1284-JCP	280.5	3697	10-304-SS	12-284-SS
A-1304-JCP	300	3695	10-304-SS	12-304-SS
A-1334-JCP	330	4262	10-304-SS	12-334-SS
A-1379-JCP	375	4615	10-379-SS	12-379-SS



TO PLACE AN ORDER, OR JUST ASK A QUESTION, CALL (847) 677 - 0333 OR FAX (847) 677 - 0138

REVISION 4.0

12/17/03