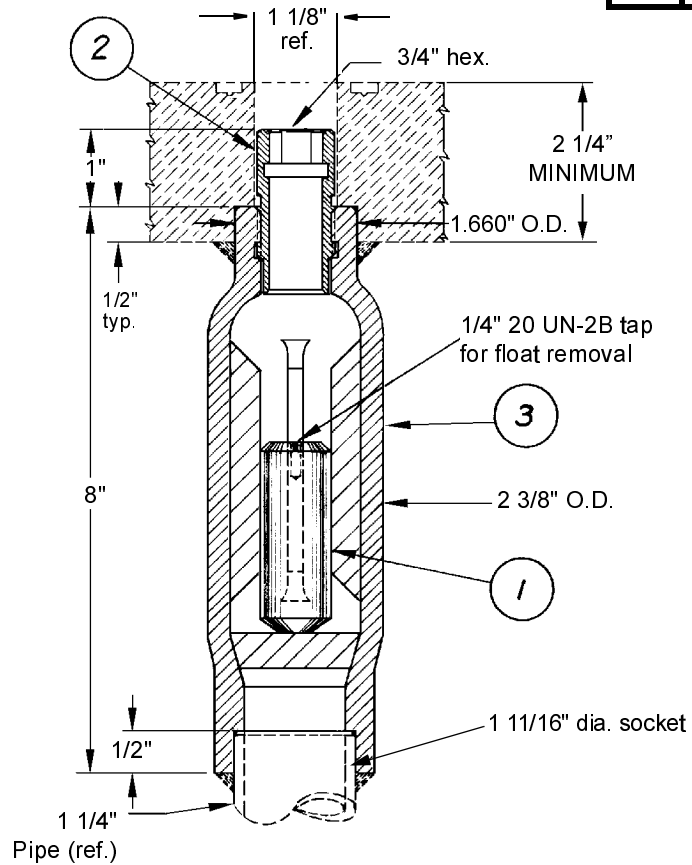


© 2002 Midland Manufacturing Corp.

All designs subject to change without notice. Installation dimensions and mounting arrangements are for general information. Certified drawings are available upon request.

ITEM NO.	QTY.	PART NAME	A-121-CN		A-121-CS		A-121-SS		A-121-ML-A		A-121-ML-B	
			MATERIAL	PART NO.	MATERIAL	PART NO.	MATERIAL	PART NO.	MATERIAL	PART NO.	MATERIAL	PART NO.
1	1	FLOAT	ALLOY 20	120-1-CN	STEEL	120-1-CS	STAINLESS	120-1-SS	MONEL	120-1-ML	MONEL	120-1-ML
2	1	SEAT	ALLOY 20	120-2-CN	STEEL	120-2-CS	STAINLESS	120-2-SS	MONEL	120-2-ML	MONEL	120-2-ML
3	1	BODY	ALLOY 20	121-3-CN	STEEL	121-3-CS	STAINLESS	121-3-SS	STEEL	121-3-CS	MONEL	121-3-ML



Maximum flow rate is 32,000 pounds of water per hour.



TO PLACE AN ORDER, OR JUST ASK A QUESTION, CALL (847) 677 - 0333 OR FAX (847) 677 - 0138

REVISION 4.0

3/13/01