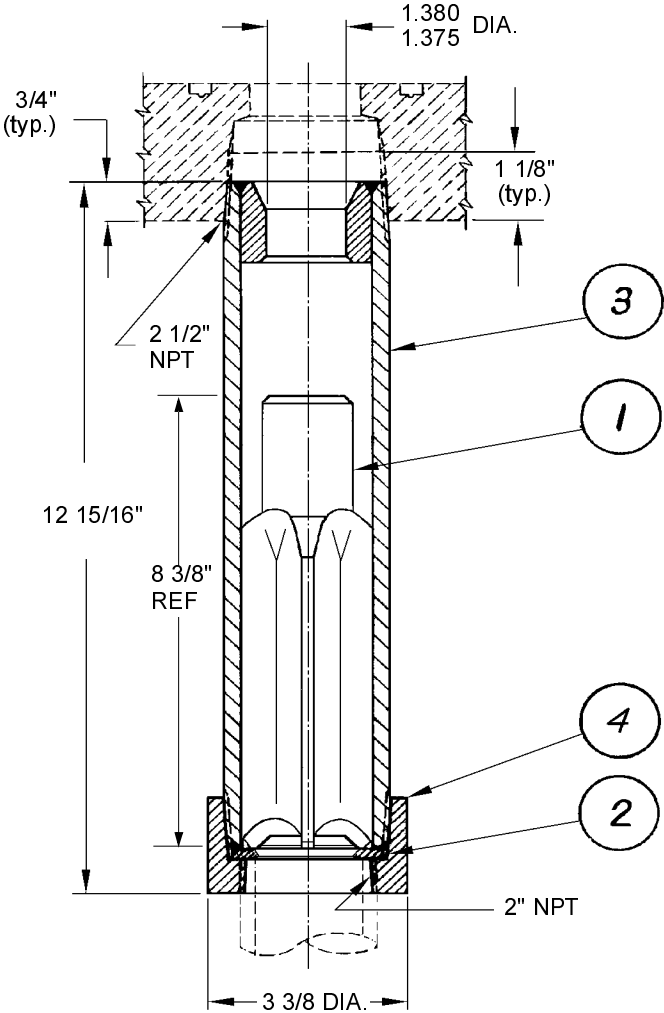


© 2002 Midland Manufacturing Corp.  
 All designs subject to change without notice. Installation dimensions and mounting  
 arrangements are for general information. Certified drawings are available upon request.

2"



ITEM NO.	QTY.	PART NAME	A-130		A-132	
			MATERIAL	PART NO.	MATERIAL	PART NO.
1	1	FLOAT	MALLEABLE IRON	130-1-MI	STAINLESS	132-1-SS
2	1	WASHER	STEEL	130-2-CS	STAINLESS	132-2-SS
3	1	BODY	STEEL	130-3-CS	STAINLESS	132-3-SS
4	1	COUPLING	STEEL	130-4-CS	STAINLESS	132-4-SS

Maximum flow rated 180 gallons of liquid propane per minute.



TO PLACE AN ORDER, OR JUST ASK A QUESTION, CALL (847) 677 - 0333 OR FAX (847) 677 - 0138

REVISION 4.0

1/13/97