

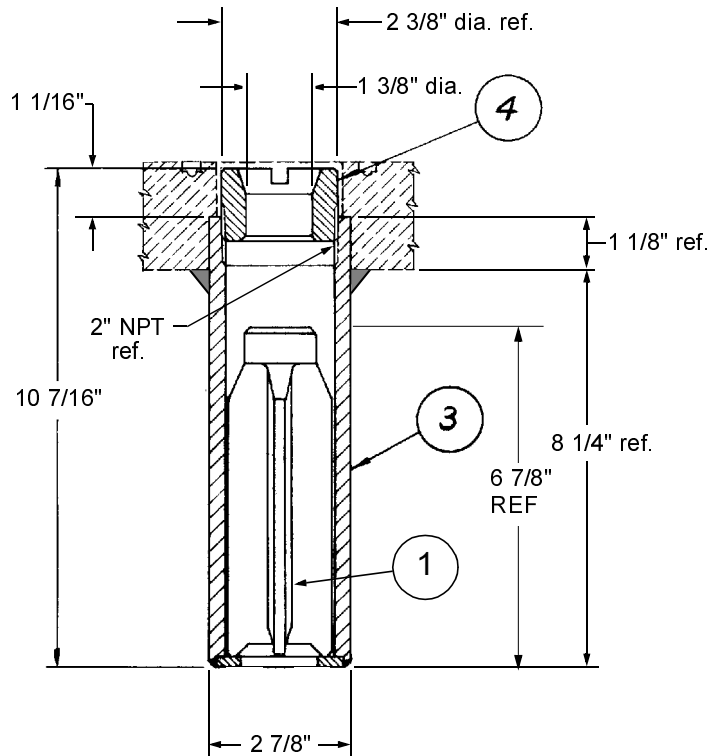
© 2002 Midland Manufacturing Corp.

All designs subject to change without notice. Installation dimensions and mounting arrangements are for general information. Certified drawings are available upon request.

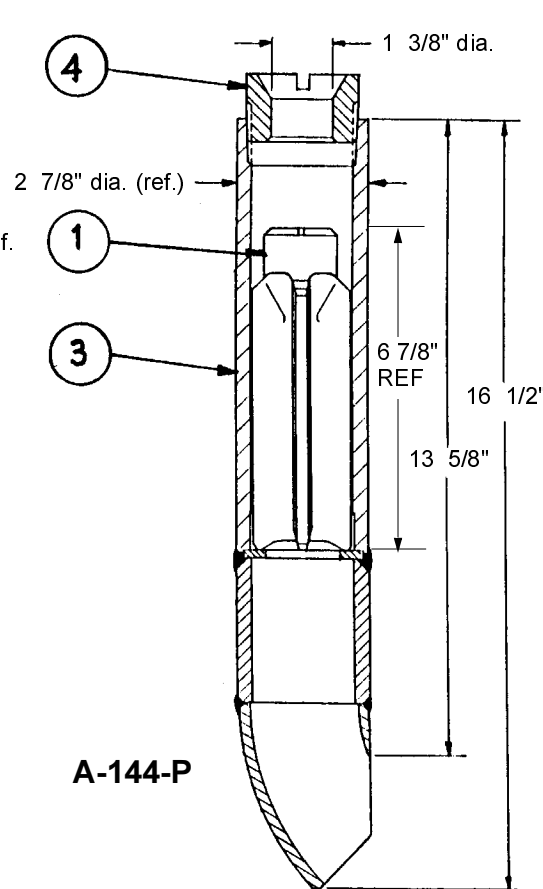
ITEM NO.	QTY.	PART NAME	A-144		A-146		A-146-MO	
			MATERIAL	PART NO.	MATERIAL	PART NO.	MATERIAL	PART NO.
1	1	FLOAT	MALL IRON	144-1-MI	STAINLESS	146-1-SS	STAINLESS	146-1-MO
3	1	BODY ASSEMBLY	STEEL	144-30-CS	STAINLESS ⁽²⁾	146-30-SS	STAINLESS ⁽²⁾	146-30-MO
4	1	PLUG	STEEL	134-5-CS	STAINLESS	136-5-SS	STAINLESS	136-5-MO

ITEM NO.	QTY.	PART NAME	A-144-P		A-144-W	
			MATERIAL	PART NO.	MATERIAL	PART NO.
1	1	FLOAT	MALL IRON	144-1-MI	MALL IRON	144-1-MI
3	1	BODY ASM	STEEL	144-31-CS	STEEL	144-32-CS
4	1	PLUG(1)	STEEL	134-5-CS	STEEL	134-5-CS

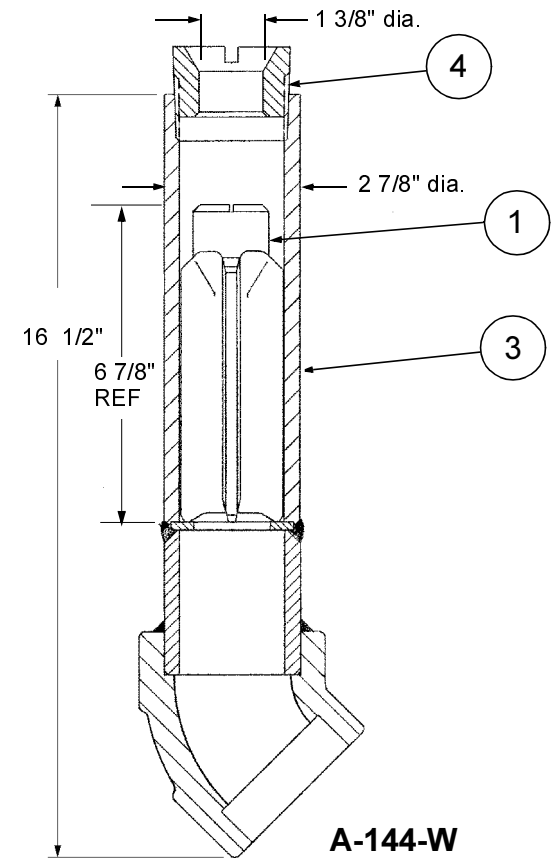
NOTE: Use wrench T-312-CS to install or remove plug. 2 For nitronic 60 plug add suffix -N60 to A-136 (I.E. A-136-N60)



A-144
A-146



A-144-P



A-144-W



TO PLACE AN ORDER, OR JUST ASK A QUESTION, CALL (847) 677 - 0333 OR FAX (847) 677 - 0138

REVISION 4.0

12/14/99