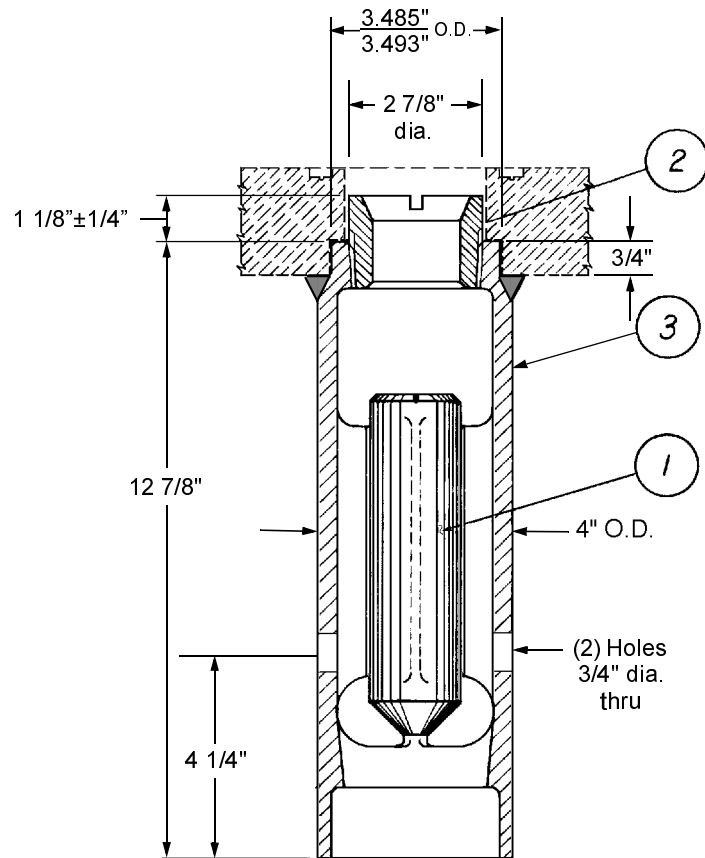


© 2002 Midland Manufacturing Corp.

All designs subject to change without notice. Installation dimensions and mounting arrangements are for general information. Certified drawings are available upon request.

3" FOR VAPOR LINES



ITEM NO.	QTY.	PART NAME	A-174		A-177	
			MATERIAL	PART NO.	MATERIAL	PART NO.
1	1	FLOAT	STEEL	164-1-CS	STAINLESS	167-1-SS
2	1	PLUG(1)	STEEL	164-2-CS	STAINLESS	167-2-SS
3	1	BODY	STEEL	174-3-CS	STAINLESS	177-3-SS

NOTES: 1. Use wrench T-312-CS to install or remove plug.
 2. THIS CHECK VALVE IS FOR USE IN THE VAPOR LINE AND IS NOT LIQUID FLOW RATED.



TO PLACE AN ORDER, OR JUST ASK A QUESTION, CALL (847) 677 - 0333 OR FAX (847) 677 - 0138

REVISION 4.0

5/20/99