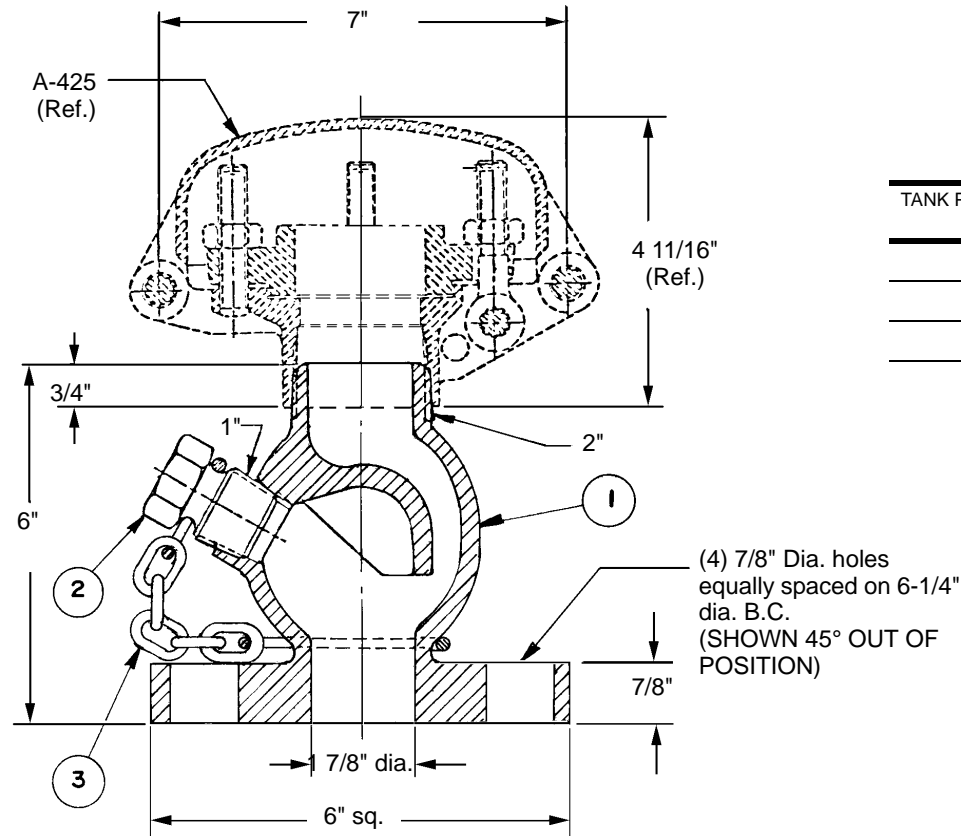


ITEM NO.	QTY.	PART NAME	A-426-15-CS		A-426-15-XS		A-426-15-SS		A-426-15-MO	
			MATERIAL	PART NO.	MATERIAL	PART NO.	MATERIAL	PART NO.	MATERIAL	PART NO.
1	1	BODY	STEEL	426-15-CS	STEEL/SS INSERT	426-15-XS	STAINLESS	426-15-SS	316 STAINLESS	426-15-MO
2	1	PLUG <sup>(2)</sup>	STEEL	24-CS	STEEL	24-CS	NITRONIC 60	24-N60	NITRONIC 60	24-N60
3	1	CHAIN ASSEMBLY	STEEL	24-10-CS	STEEL	24-10-CS	STEEL <sup>(1)</sup>	24-10-CS	STEEL <sup>(1)</sup>	24-10-CS

**NOTE:** 1. Alternate material available. 2. Order 1" nipple 3" long (part number 425-154) and cap 1" NPT (part number 34) separately if required instead of plug (part number 24) and specify materials.



TANK PRESSURE (PSIG)	DISCHARGE FLOW COEFFICIENT
85	.81
88	.81
181	.75