

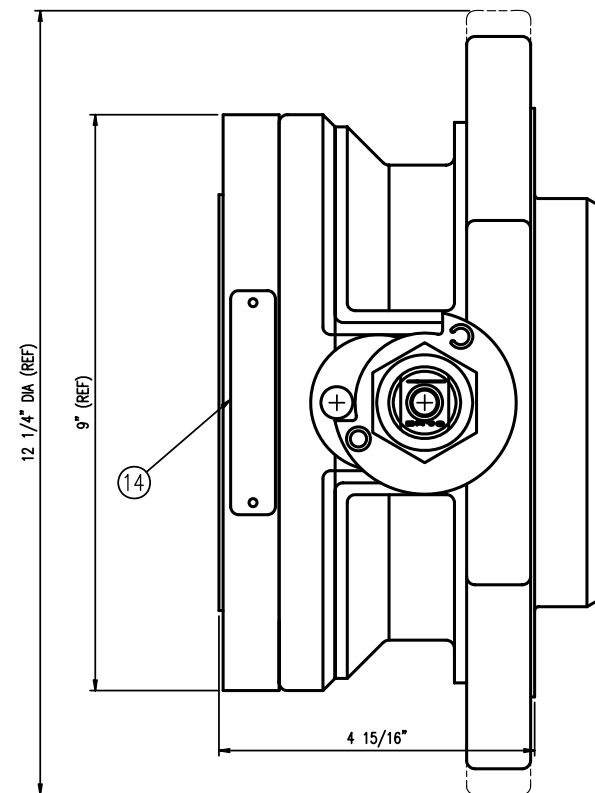
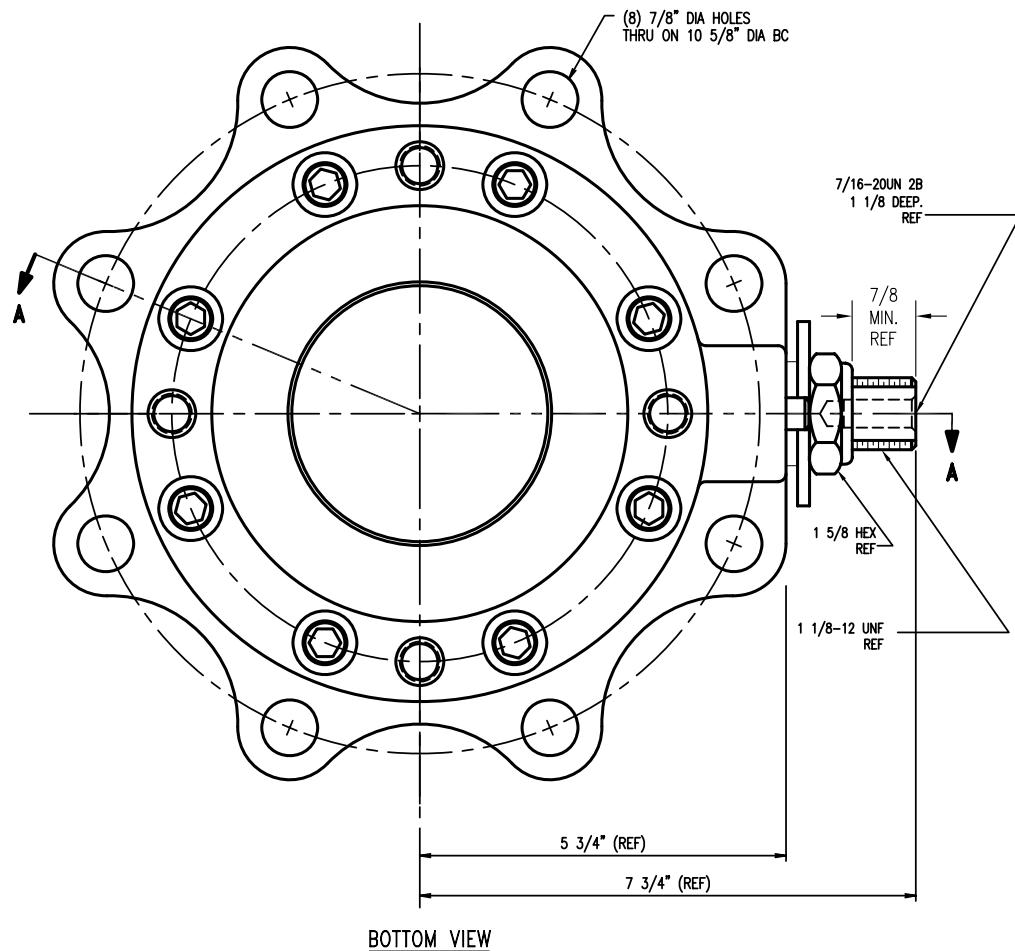
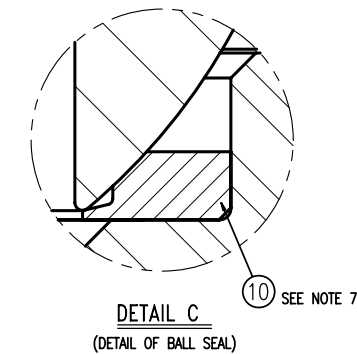
ITEM	QTY	PART NAME	A-520-C1-CS		A-520-C1-MO	
			PART NO.	MATERIAL	PART NO.	MATERIAL
1	1	CAP	520-112-CS	STEEL	520-112-MO	STAINLESS STEEL
2	1	STEM	520-2-SS	STAINLESS STEEL	520-2-SS	STAINLESS STEEL
3	1	BALL	520-3-MO	STAINLESS STEEL	520-3-MO	STAINLESS STEEL
4	1	BODY	520-45-CS	STEEL	520-45-MO	STAINLESS STEEL
5	1	PACKING	520-5-01-TF	VIRGIN TEFLON	520-5-01-TF	VIRGIN TEFLON
6	1	SPACER	520-6-SS	STAINLESS STEEL	520-6-SS	STAINLESS STEEL
7	1	PIN	520-7-CS	STEEL	520-7-CS	STEEL
8	1	STOP PLATE	520-8-CS	STEEL PLATED	520-8-CS	STEEL PLATED
9	8	CAPSCREW, HEX-SOC, 5/8"-11UNC-2A X 1" LG	520-9-CS	STEEL	520-9-CS	STEEL
10	2	SEAL, BALL	SEE TABLE	SEE TABLE	SEE TABLE	SEE TABLE
11	1	SEAL, VALVE BODY	520-11-01-TF	VIRGIN TEFLON	520-11-01-TF	VIRGIN TEFLON
12	1	WASHER, THRUST	520-12-01-TF	VIRGIN TEFLON	520-12-01-TF	VIRGIN TEFLON
13	1	LOCKNUT, HEX, THIN, 1 1/8"-12UNF, NYLON INSERT	520-13-CS	STEEL PLATED	520-13-CS	STEEL PLATED
14	1	NAMEPLATE	520-14-11-SS	STAINLESS STEEL	520-14-21-SS	STAINLESS STEEL

(\*) HANDLES ARE AVAILABLE. FOR LONGITUDINAL HANDLE USE 520-152-CS OR 520-153-CS. FOR TRANSVERSE HANDLE USE 520-154-CS.

VALVE MODEL NO.	SEAL, BALL	
	PART NO.	MATERIAL
A-520-C1-CS	520-10-01-TF	VIRGIN TEFLON
A-520-C1-MO	520-10-01-TF	VIRGIN TEFLON
A-520-C1-CS-ST	520-10-04-ST	316 SS FILLED TEFLON
A-520-C1-MO-ST	520-10-04-ST	316 SS FILLED TEFLON

NOTES:

- STOP PIN (7) INSTALLATION INTO BODY (4) IS AN INTERFERENCE FIT. THE STOP PIN MUST EXTEND 0.50" AFTER BEING PRESSED INTO BODY.
- BODY SEAL (11) MUST BE PRESS-FIT INTO BODY (4) BEFORE CAP (1) IS INSTALLED.
- AFTER ASSEMBLY THE BODY (4) AND CAP (1) MUST CONTACT. NO GAP GREATER THAN .002" IS ALLOWED. SEE NOTE #8.
- STEM PACKING (5) TO BE INSTALLED WITH CHEVRONS ORIENTED PER DETAIL "B".
- TORQUE PACKING NUT TO 150 FT-LBS INITIALLY.
- AFTER ASSEMBLY OF VALVE THERE MUST BE A 1/8" MIN. AND 1/4" MAX. GAP BETWEEN THE BODY (4) AND THE VALVE STEM STOP (8).
- APPLY SMALL AMOUNT OF DOW CORNING 111 LUBRICANT ON 45° TAPER OF BALL SEALS (10) PRIOR TO ASSEMBLY.
- TORQUE SOCKET HEAD CAP SCREWS IN CROSS PATTERN TO 130 LB-FT.
- VALVE IS ASSEMBLED FOR COUNTER CLOCKWISE SHAFT ROTATION TO CLOSE.
- FOR CLOCKWISE SHAFT ROTATION TO CLOSE, REMOVE ITEM #13, REMOVE, TURN OVER AND REINSTALL ITEM #8, AND REINSTALL AND TIGHTEN ITEM #13 PER NOTE #5.



A	ADDED NOTE #7	FS	12/14/07	CHP
LTR	REVISIONS	DRN	DATE	APP

AAR E022012

**MIDLAND** MANUFACTURING CORP.  
SKOKIE, IL, U.S.A.

4" BALL VALVE, LOW PROFILE

MATERIAL: SEE TABLE  
TOLERANCES UNLESS SPECIFIED:  
2 PLACE DECIMAL ± .015  
3 PLACE DECIMAL ± .005  
ANGULAR ± 1', FRACTIONS ± 1/64  
CHAMFERS AND WELD PREP ± 5'  
FINISH (Ra) : √ =

REMOVE ALL BURRS.  
BREAK ALL EDGES & CORNERS.

SCALE: 1/3 DRAWN: FS DATE: 6/23/06 APPROVED: CHP

CAD FILE NO. A-520-C1 SIZE B DWG NO. A-520-C1 REV A