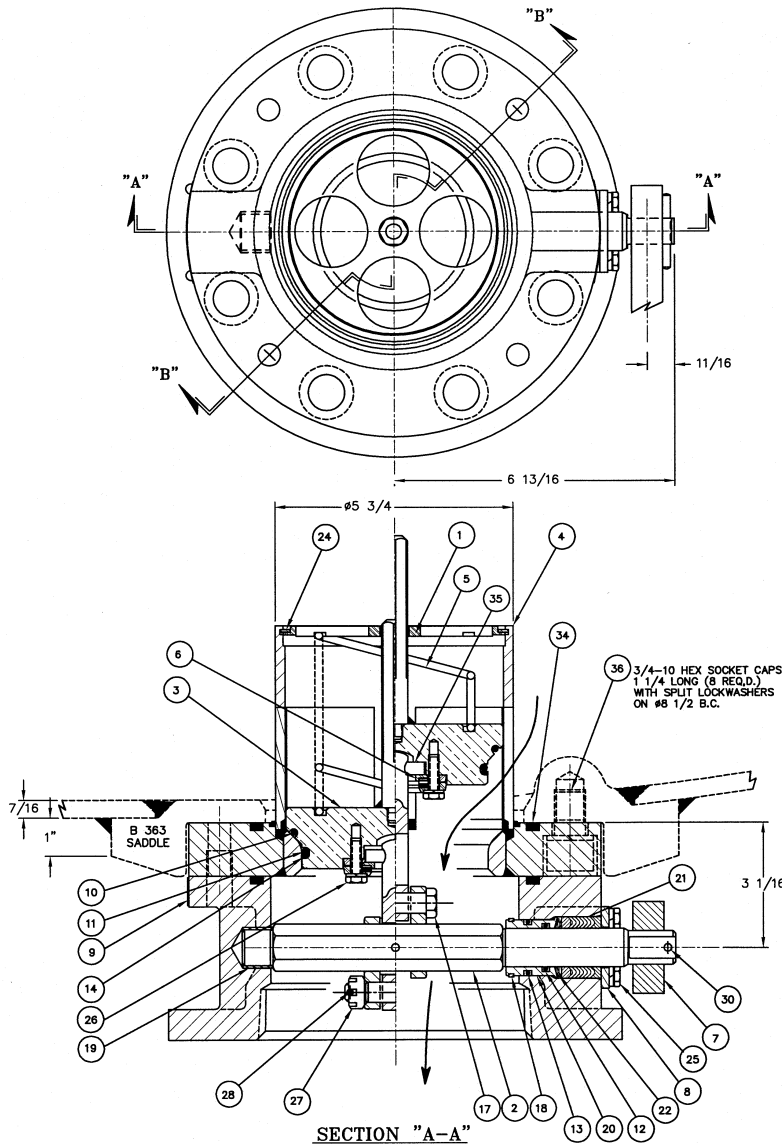
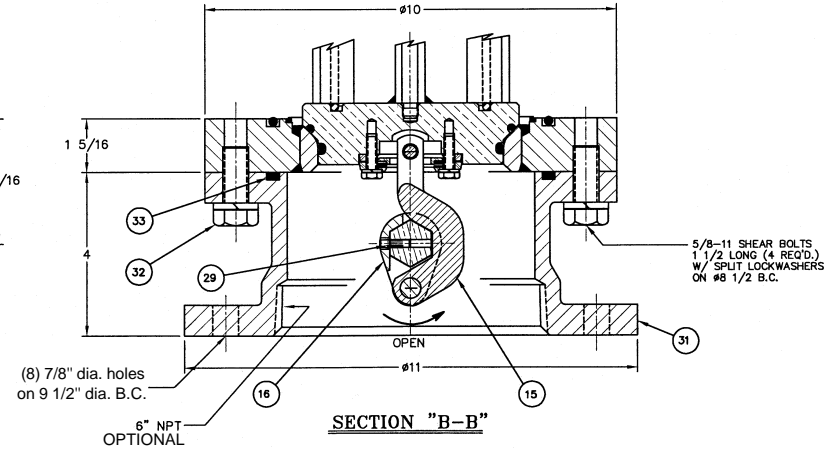


BOTTOM EQUIPMENT OUTLET VALVE - FLANGED

A-547-CS, A-547-XS,
A-547-SS, A-547-MO



APPROVED FOR PROTECTION LEVEL A
OF AAR CIRCULAR D.V. 2007



NOTE:
ROTATE SHAFT AT LEAST 150° CCW TO OPEN VALVE.
SECURE HANDLE IN OPEN POSITION WHILE UNLOADING.

PATENT 5,342,026



TO PLACE AN ORDER, OR JUST ASK A QUESTION, CALL (847) 677 - 0333 OR FAX (847) 677 - 0138

REVISION 4.0

8/22/02



TO PLACE AN ORDER, OR JUST ASK A QUESTION, CALL (847) 677 - 0333 OR FAX (847) 677 - 0138

REVISION 4.0

03/30/04

ITEM	QTY.	PART NAME	A-547-CS (CARBON STEEL/ SS TRIM)		A-547-XS (CS/ SS TRIM & CAGE)		A-547-SS (TYPE 304 SS)		A-547-MO (TYPE 316 SS)	
			MATERIAL	PART NO.	MATERIAL	PART NO.	MATERIAL	PART NO.	MATERIAL	PART NO.
1	1	TOP GUIDE	STEEL	549-1-CS	STAINLESS	549-1-SS	STAINLESS	549-1-SS	STAINLESS	549-1-MO
2	1	SHAFT	STAINLESS	545-2-SS	STAINLESS	545-2-SS	STAINLESS	545-2-SS	STAINLESS	545-2-SS
3	1	RETAINER ASM ⁽³⁾	STAINLESS	549-3-SS	STAINLESS	549-3-SS	STAINLESS	549-3-SS	STAINLESS	549-3-MO
4	1	BODY	STEEL/ SS SEAT	549-4-CS	STEEL/ SS SEAT, CAGE	549-4-XS	STAINLESS	549-4-SS	STAINLESS	549-4-MO
5	1	SPRING	STAINLESS	545-5-SS	STAINLESS	545-5-SS	STAINLESS	545-5-SS	STAINLESS	545-5-MO
6	1	RETAINER COVER ASM ⁽³⁾	STAINLESS	549-61-SS	STAINLESS	549-61-SS	STAINLESS	549-61-SS	STAINLESS	549-61-MO
7	1	HANDLE ⁽²⁾	STEEL	549-7-CS	STEEL	549-7-CS	STEEL	549-7-CS	STEEL	549-7-CS
8	1	PACKING FLANGE	STEEL, PLATED	549-8-CS	STEEL, PLATED	549-8-CS	STEEL, PLATED	549-8-CS	STEEL, PLATED	549-8-CS
9										
10	1	SEAT *O* RING ⁽³⁾	BUNA-N ⁽¹⁾	545-10-BN	BUNA-N ⁽¹⁾	545-10-BN	BUNA-N ⁽¹⁾	545-10-BN	BUNA-N ⁽¹⁾	545-10-BN
11	1	BORE *O* RING ⁽³⁾	BUNA-N ⁽¹⁾	545-11-BN	BUNA-N ⁽¹⁾	545-11-BN	BUNA-N ⁽¹⁾	545-11-BN	BUNA-N ⁽¹⁾	545-11-BN
12	1	SHAFT *O* RING	BUNA-N ⁽¹⁾	545-12-BN	BUNA-N ⁽¹⁾	545-12-BN	BUNA-N ⁽¹⁾	545-12-BN	BUNA-N ⁽¹⁾	545-12-BN
13	1	BUSHING *O* RING	BUNA-N ⁽¹⁾	545-13-BN	BUNA-N ⁽¹⁾	545-13-BN	BUNA-N ⁽¹⁾	545-13-BN	BUNA-N ⁽¹⁾	545-13-BN
14	1	WIPER RING ⁽³⁾	PTFE	545-14-TF	PTFE	545-14-TF	PTFE	545-14-TF	PTFE	545-14-TF
15	1	CAM LEVER ⁽³⁾	STAINLESS	549-15-SS	STAINLESS	549-15-SS	STAINLESS	549-15-SS	STAINLESS	549-15-SS
16	1	CAM	STAINLESS	545-16-N60	STAINLESS	545-16-N60	STAINLESS	545-16-N60	STAINLESS	545-16-N60
17	1	CAM BOLT	STAINLESS	545-17-SS	STAINLESS	545-17-SS	STAINLESS	545-17-SS	STAINLESS	545-17-SS
18	1	RETAINER RING	STAINLESS	545-18-SS	STAINLESS	545-18-SS	STAINLESS	545-18-SS	STAINLESS	545-18-SS
19	1	SHAFT BUSHING	STAINLESS	545-19-N60	STAINLESS	545-19-N60	STAINLESS	545-19-N60	STAINLESS	545-19-N60
20	1	PACKING BUSHING	STAINLESS	545-20-N60	STAINLESS	545-20-N60	STAINLESS	545-20-N60	STAINLESS	545-20-N60
21	1	PACKING SET	PTFE	549-21-TF	PTFE	549-21-TF	PTFE	549-21-TF	PTFE	549-21-TF
22	1	PACKING SPRING	STAINLESS	549-22-SS	STAINLESS	549-22-SS	STAINLESS	549-22-SS	STAINLESS	549-22-SS
23										
24	1	RETAINER RING	STAINLESS	549-24-SS	STAINLESS	549-24-SS	STAINLESS	549-24-SS	STAINLESS	549-24-MO
25	4	PACKING BOLT, LKW	STAINLESS	545-25-MO	STAINLESS	545-25-MO	STAINLESS	545-25-MO	STAINLESS	545-25-MO
26	4	RETAINER BOLT, LKW ⁽³⁾	STAINLESS	545-26-MO	STAINLESS	545-26-MO	STAINLESS	545-26-MO	STAINLESS	545-26-MO
27	1	CAM BOLT NUT	STEEL, PLATED	545-27-CS	STEEL, PLATED	545-27-CS	STAINLESS	545-27-SS	STAINLESS	545-27-MO
28	1	CAM BOLT PIN	STAINLESS	545-28-SS	STAINLESS	545-28-SS	STAINLESS	545-28-SS	STAINLESS	545-28-MO
29	1	CAM PIN	STAINLESS	545-29-MO	STAINLESS	545-29-MO	STAINLESS	545-29-MO	STAINLESS	545-29-MO
30	1	HANDLE PIN	STAINLESS	545-30-SS	STAINLESS	545-30-SS	STAINLESS	545-30-SS	STAINLESS	545-30-SS
31	1	BASE	STEEL	547-31-CS	STEEL	547-31-CS	STAINLESS	547-31-SS	STAINLESS	547-31-MO
32	4	BASE BOLT, LOCKWASHER	STEEL, PLATED	547-32-CS	STEEL, PLATED	547-32-CS	STEEL, PLATED	547-32-CS	STEEL, PLATED	547-32-CS
33	1	BASE *O* RING	BUNA-N ⁽¹⁾	547-33-BN	BUNA-N ⁽¹⁾	547-33-BN	BUNA-N ⁽¹⁾	547-33-BN	BUNA-N ⁽¹⁾	547-33-BN
34	1	BODY *O* RING	BUNA-N ⁽¹⁾	547-33-BN	BUNA-N ⁽¹⁾	547-33-BN	BUNA-N ⁽¹⁾	547-33-BN	BUNA-N ⁽¹⁾	547-33-BN
35	1	PIN ⁽³⁾	STAINLESS	549-35-N60	STAINLESS	549-35-N60	STAINLESS	549-35-N60	STAINLESS	549-35-N60
36	8	BODY BOLT, LKW	STEEL, PLATED	363-2-AS	STEEL, PLATED	363-2-AS	STEEL ⁽¹⁾ , PLATED	363-2-AS	STEEL ⁽¹⁾ , PLATED	363-2-AS

NOTE: 1 Alternate material available. 2. Alternate handle shapes available. 3. Included in retainer assembly replacement kit 549-0300