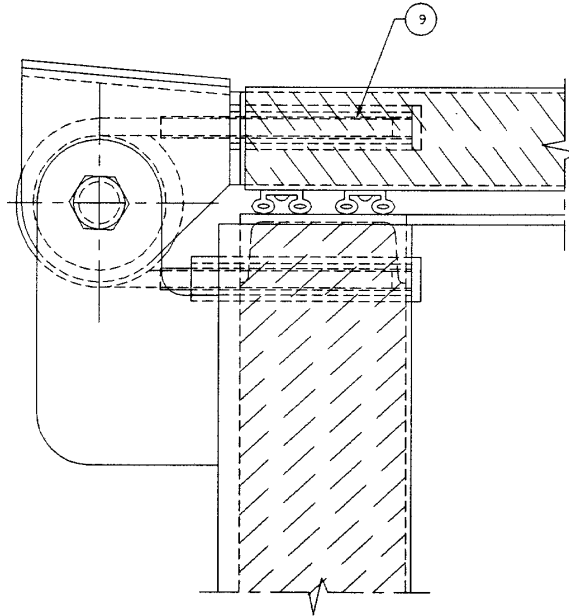
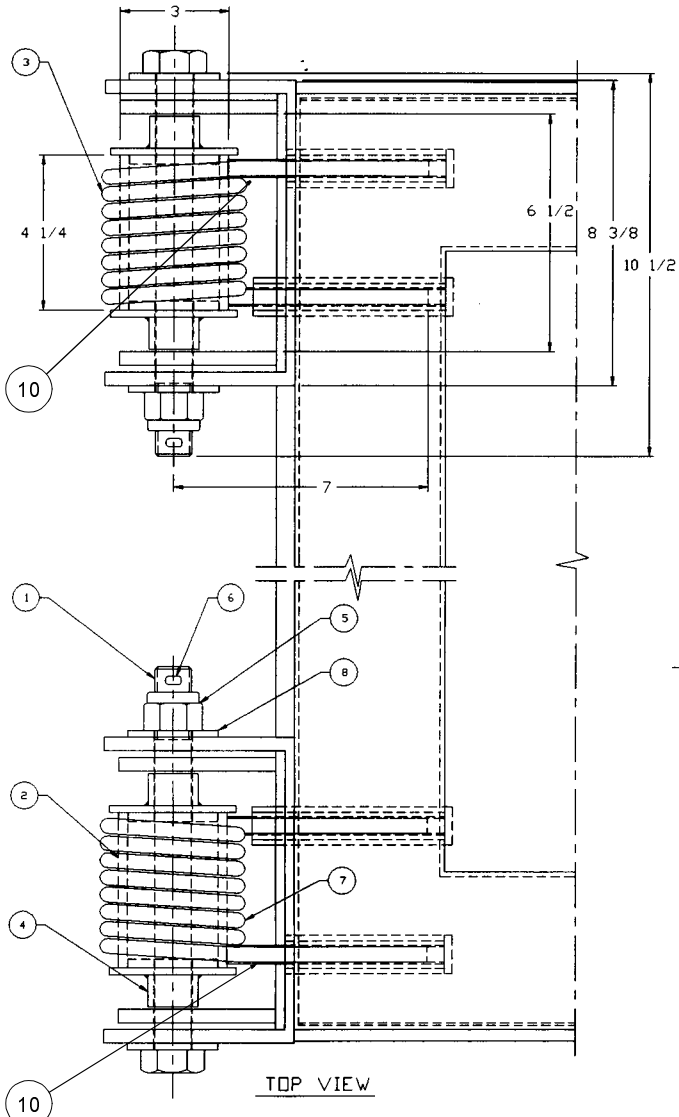


© 2002 Midland Manufacturing Corp.

All designs subject to change without notice. Installation dimensions and mounting arrangements are for general information. Certified drawings are available upon request.



ITEM NO.	QTY.	PART NAME	PART NO.	MATERIAL
1	2	HINGE PIN	314-1-CS	STEEL, PLATED
2	2	BUSHING	314-2-CS	STEEL, PAINTED
3	1	SPRING R.H. (13/32)	314-3-CS	STEEL, PAINTED
4	4	SPACER	314-4-CS	STEEL, PAINTED
5	2	LOCKNUT	303-5-CS	STEEL, PLATED
6	2	COTTER PIN	303-6-SS	STAINLESS
7	1	SPRING L.H. (13/32)	314-7-CS	STEEL, PAINTED
8	4	WASHER	314-8-CS	STEEL, PLATED
9	4	SLEEVE	314-9-TF	TEFLON
10	1	NAMEPLATE	308-32A-PS	PLASTIC
	1		314-32B-PS	

NOTE: 1. Above spring combination will result in approximately a 33 pound assist on a 48" hinge to handle dimension.

ASSEMBLY SEQUENCE

1. Assembly bushing #2, spring #3 or #7, two spacers #4 and two sleeves #9
2. Position one spring end into tube in cover and align pin holes.
3. With cover in open position slip second spring end into housing tube and align pin holes again.
4. Install hinge pin(s) #1 with washers #8 and locknut(s) #5.
5. Install cotter pins #6.
6. Close cover to test function.

MIDLAND

TO PLACE AN ORDER, OR JUST ASK A QUESTION, CALL (847) 677 - 0333 OR FAX (847) 677 - 0138

REVISION 4.0

7/1/98