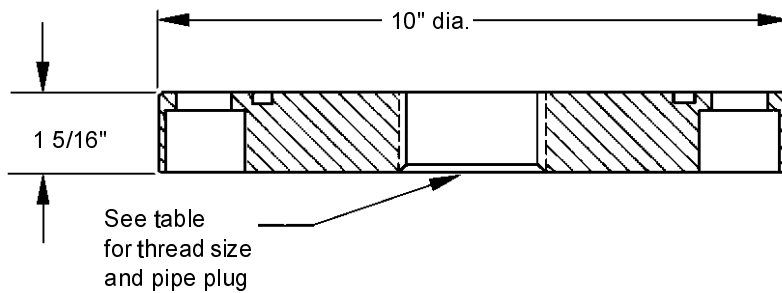
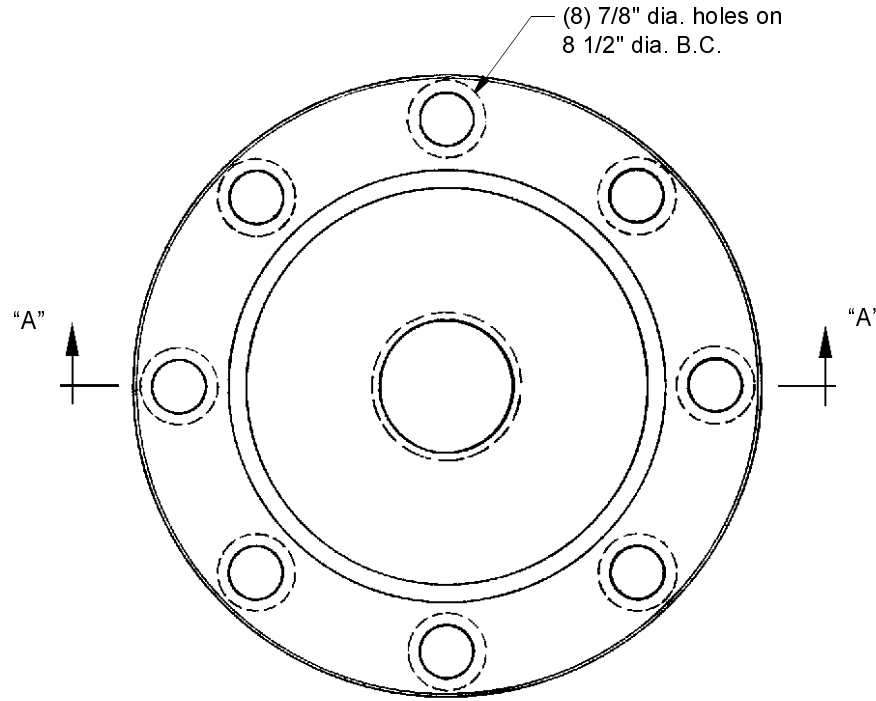


**BOTTOM EQUIPMENT
FLANGES FOR B-363 SADDLE**

**B-363-6-CS, B-363-61-CS, B-363-62-CS
B-363-6-SS, B-363-61-SS, B-363-62-SS**

© 2002 Midland Manufacturing Corp.
All designs subject to change without notice. Installation dimensions and mounting arrangements are for general information. Certified drawings are available upon request.



HARDWARE (INCLUDED IN EACH KIT)			
QTY.	PART NO.	PART NAME	MATERIAL
8	363-2-AS	SOCKET HD. CAP SCREW W/LKW	STEEL
1	547-33-BN ⁽¹⁾	"O" RING ⁽²⁾	BUNA N ⁽¹⁾

NOTES: 1 Alternate material available
2. ALTERNATE SEAL: SPIRAL WOUND GASKET PT NO 549-33-TF IS STAINLESS & TEFLON

KIT PART NO	FLANGE			PIPE PLUG W/ CHAIN
	PART NO.	MATERIAL	HOLE SIZE	PART NO. (REF.)
B-363-6-CS	363-6-CS	STEEL	NONE	NONE
B-363-61-CS	363-61-CS	STEEL	1" NPT	24-CS
B-363-62-CS	363-62-CS	STEEL	2" NPT	201-MI
B-363-6-SS	363-6-SS	STAINLESS	NONE	NONE
B-363-61-SS	363-61-SS	STAINLESS	1" NPT	24-N60
B-363-62-SS	363-62-SS	STAINLESS	2" NPT	201-N60



TO PLACE AN ORDER, OR JUST ASK A QUESTION, CALL (847) 677 - 0333 OR FAX (847) 677 - 0138

REVISION 4.0

12/21/99