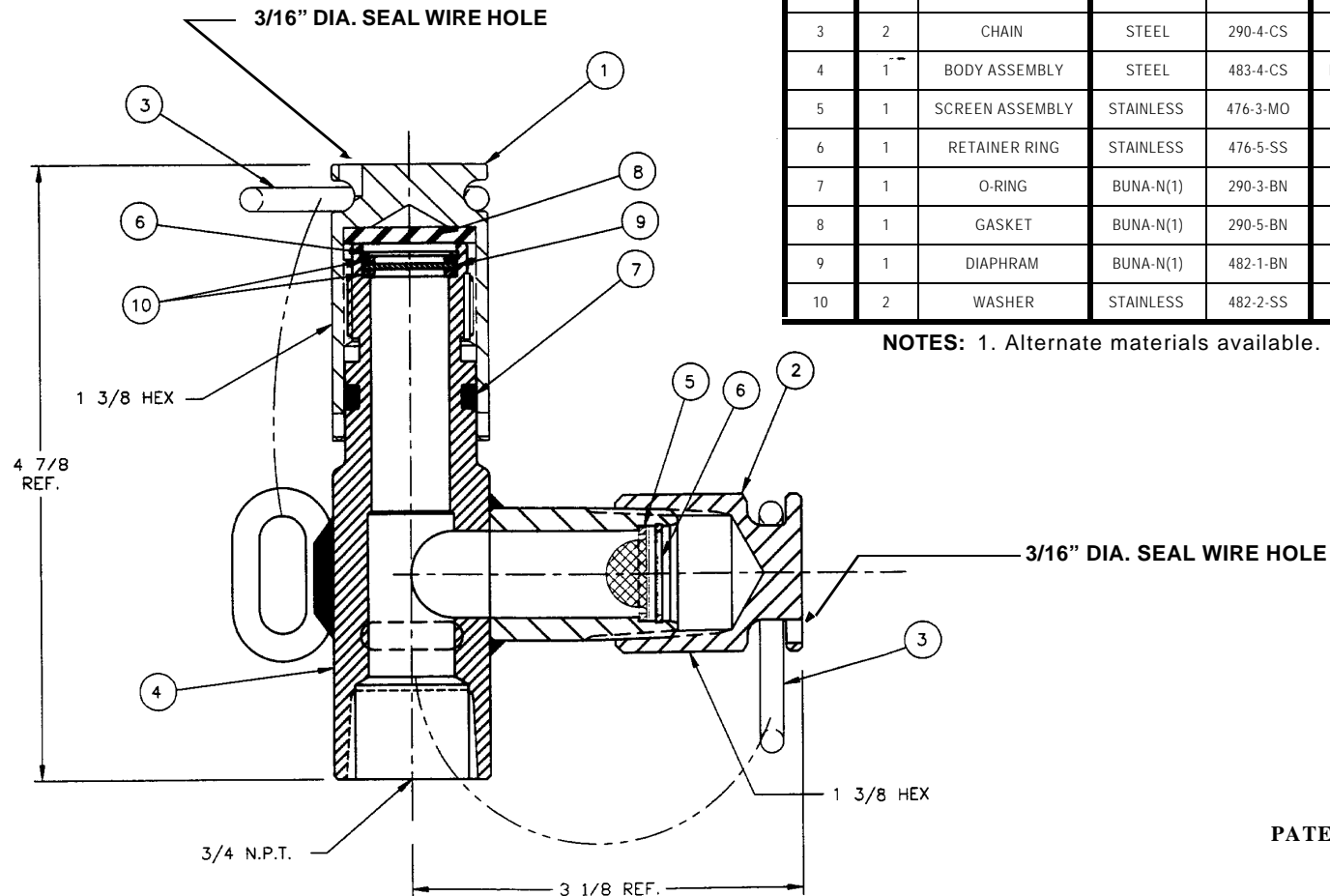


ITEM NO.	QTY.	PART NAME	B-483-CS		B-483-SS		B-483-MO	
			MATERIAL	PART NO.	MATERIAL	PART NO.	MATERIAL	PART NO.
1	1	CAP	STEEL	290-1-CS	STAINLESS	290-1-SS	STAINLESS	290-1-SS
2	1	CAP	STEEL	33-1-CS	STAINLESS	33-1-SS	STAINLESS	33-1-MO
3	2	CHAIN	STEEL	290-4-CS	STEEL	290-4-CS	STEEL	290-4-CS
4	1	BODY ASSEMBLY	STEEL	483-4-CS	NITRONIC 60	483-4-N 60	STAINLESS	483-4-MO
5	1	SCREEN ASSEMBLY	STAINLESS	476-3-MO	STAINLESS	476-3-MO	STAINLESS	476-3-MO
6	1	RETAINER RING	STAINLESS	476-5-SS	STAINLESS	476-5-SS	STAINLESS	476-5-SS
7	1	O-RING	BUNA-N(1)	290-3-BN	BUNA-N(1)	290-3-BN	BUNA-N(1)	290-3-BN
8	1	GASKET	BUNA-N(1)	290-5-BN	BUNA-N(1)	290-5-BN	BUNA-N(1)	290-5-BN
9	1	DIAPHRAM	BUNA-N(1)	482-1-BN	BUNA-N(1)	482-1-BN	BUNA-N(1)	482-1-BN
10	2	WASHER	STAINLESS	482-2-SS	STAINLESS	482-2-SS	STAINLESS	482-2-MO

NOTES: 1. Alternate materials available.



PATENT 5269342