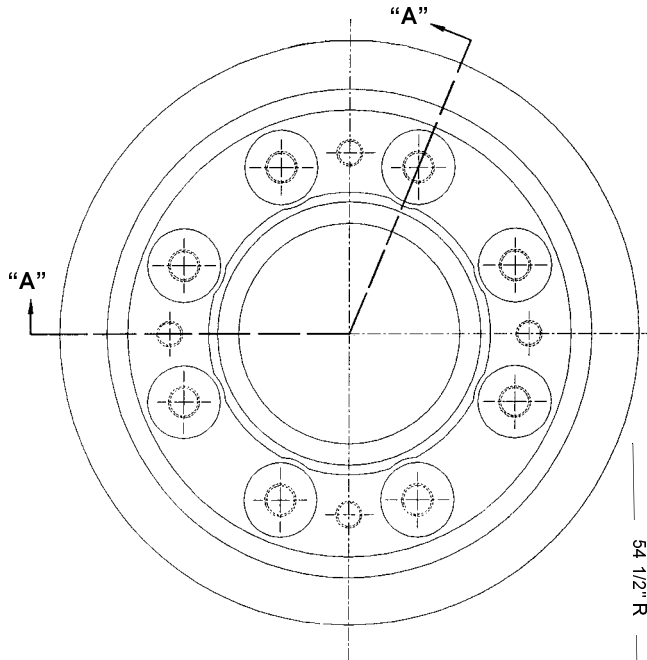
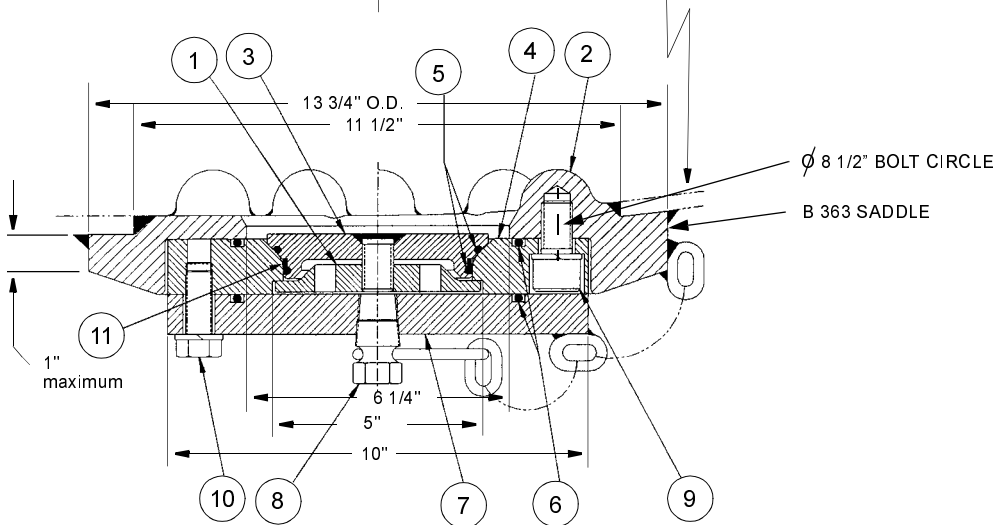


TOP VIEW



ITEM	QTY.	PART NAME	B-50-CS		B-50-SS (TYPE 304)		B-50-MO (TYPE 316)	
			MATERIAL	PART NO.	MATERIAL	PART NO.	MATERIAL	PART NO.
1	1	PLUG RETAINER	STEEL	50-1-CS	STAINLESS	50-1-SS	STAINLESS	50-1-MO
2	1	SADDLE	STEEL	B-363-CS	STAINLESS	B-363-SS	STAINLESS	B-363-MO
3	1	WASHOUT PLUG	STEEL	50-3-CS	STAINLESS	50-3-SS	STAINLESS	50-3-MO
4	1	NOZZLE FLANGE	STEEL	50-4-CS	STAINLESS	50-4-SS	STAINLESS	50-4-MO
5	2	"O" RING	BUNA-N(1)	545-11-BN	BUNA-N(1)	545-11-BN	BUNA-N(1)	545-11-BN
6	2	"O" RING	BUNA-N(1)	547-33-BN	BUNA-N(1)	547-33-BN	BUNA-N(1)	547-33-BN
7	1	FLANGE	STEEL	50-7-CS	STAINLESS	50-7-SS	STAINLESS	50-7-SS
8	1	3/4" PIPE PLUG W/ 1/4" X 3/8" CHAIN	STEEL	23-CS/CS	STAINLESS	23-SS/SS	STAINLESS	23-SS/SS
9	8	3/4-10 CAP SCREWS WITH LOCKWASHER	STEEL	363-2-AS	STEEL(1)	363-2-AS	STEEL(1)	363-2-AS
10	4	5/8-11 SHEAR BOLT WITH LOCKWASHER	STEEL	547-32-CS	STEEL(1)	547-32-CS	STEEL(1)	547-32-CS
11	1	WIPER RING	PTFE	545-14-TF	PTFE	545-14-TF	PTFE	545-14-TF

NOTE: 1 Alternate material available.



SECTION "A-A"