



A-520/A-522 Ball Valves

Midland bottom outlet ball valves are manufactured using durable stainless-steel or carbon-steel

Ethanol's role in the world's chemical industry continues to expand dramatically. In addition to its increased use as an alternative automotive fuel, ethanol is produced and transported for a wide variety of industrial applications, as well. But beyond its industrial and fueling uses, ethanol will play an increasingly pivotal role in the nation's security and economy as its use reduces our dependence on foreign oil and creates a source of added income for American farmers.

As this use of ethanol continues to grow, so do the challenges in shipping it by rail. Due to its affinity to water, ethanol cannot be shipped via multi-product pipeline; therefore, rail cars are its primary mode of transport. Ethanol is also more susceptible to contamination than other fuel products, while certain materials may be incompatible with ethanol blends. This list of incompatible materials includes metals like zinc, brass, lead, aluminum and plated steel, and non-metallic materials like natural rubber, polyurethane, cork and polyvinyl chloride (PVC).



Midland Manufacturing is the leading manufacturer of valves, actuators, gauges and other equipment for the railroad tank car industry. Midland has developed a series of product lines that are made with materials compatible with the loading, transportation and unloading of ethanol.

One of these is the A-520 Series of Bottom Outlet Ball Valves. Realizing that ethanol has unique properties that can affect the integrity of valve seals and lead to leaks or valve failure, Midland has created this line of bottom outlet ball valves with DuraSteel ball valve seats and PFA-encapsulated plug valve seals. DuraSteel ball valve seats offer greater resistance to abrasion that reduces the chance of leakage caused by particle contamination.

Features

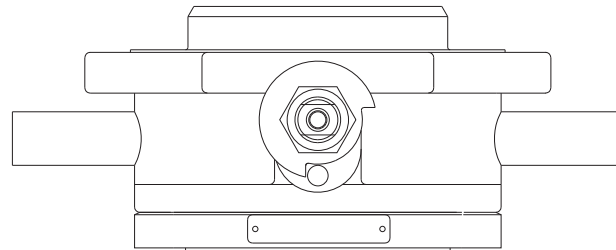
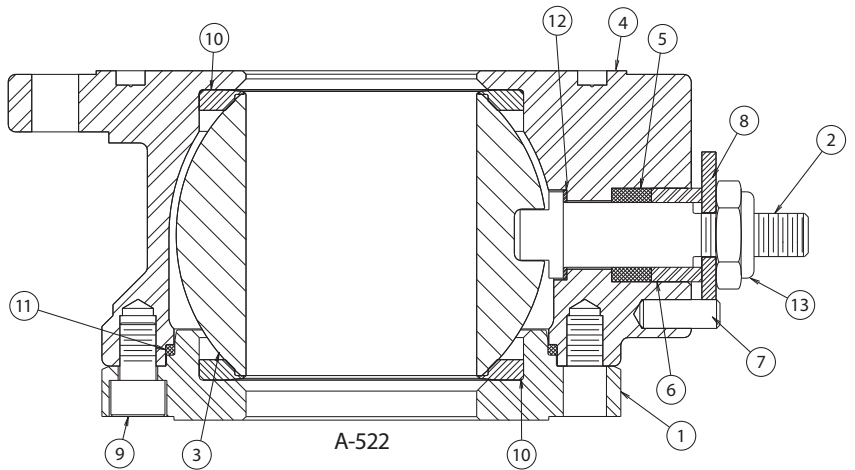
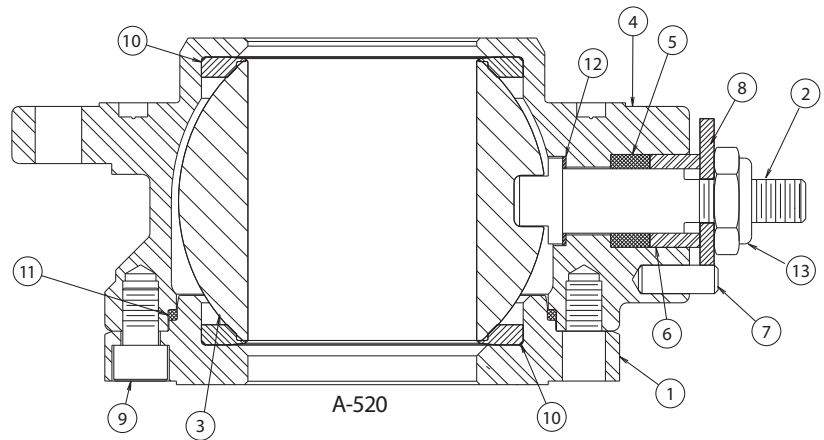
- Corrosion resistant nickel-plated aluminum body
- Main shaft wiper seal will prevent contaminants from entering seal area
- Compact design fits in all air valve locations
- Universal mounting fits all current API adaptors and vapor fittings
- Rigid mounting for extended valve life

Ordering Specifications

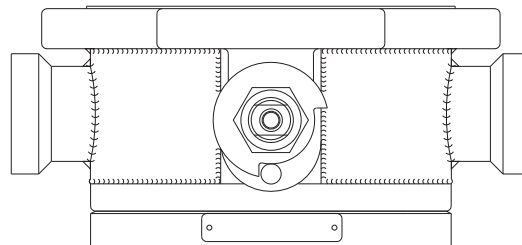
A-520/A-522 Ball Valves

ITEM	PART DESCRIPTION
1	Cap
2	Stem
3	Ball
4	Body
5	Packing
6	Spacer
7	Pin
8	Stop Plate
9	Capscrew, Hex-soc, 5/8"-11Unc-2a s 1" Lg
10	Seal, Ball
11	Seal, Valve Body
12	Washer, THRUST
13	Locknut, Hex, Thin, 1 1/8"-12Unf, Ny. Insert
14	Nameplate
15	Handle (Optional)
16	Washer, Handle (Optional)
17	Bolt, Handle (Optional)

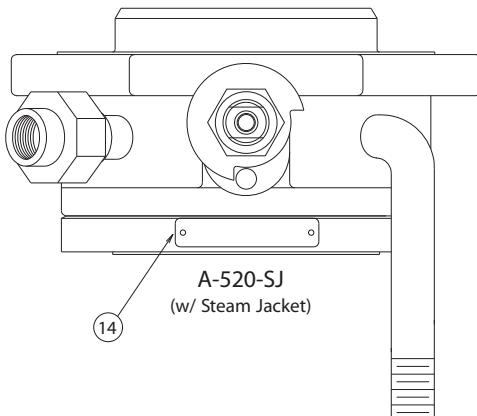
A-520/A-522 Ball Valves



A-520-SJ3
(w/ Steam Jacket)



A-522-SJ
(w/ Steam Jacket)



A-520-SJ
(w/ Steam Jacket)